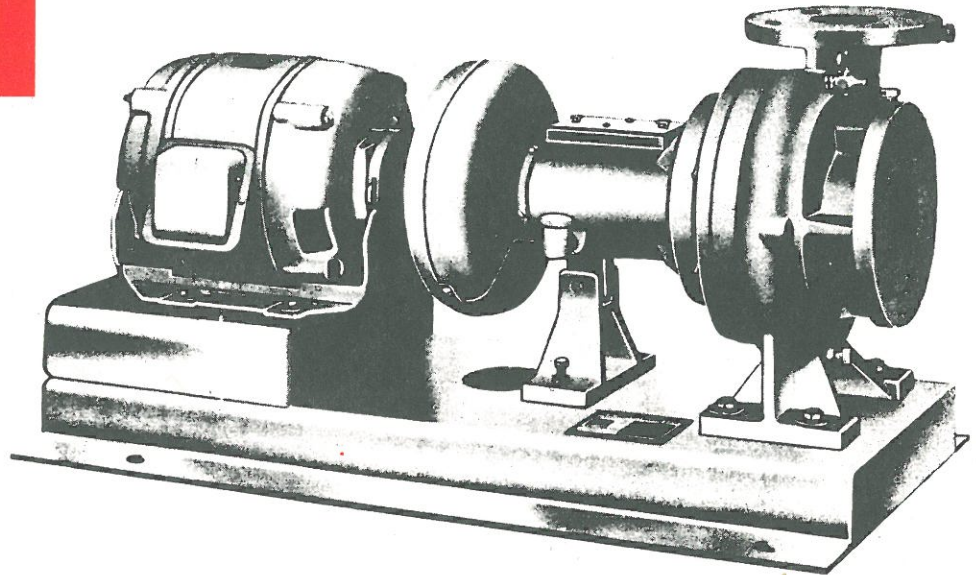
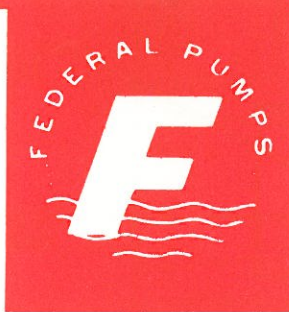


**TYPE**  
**CQB**

**SLEEVE BEARING**  
**flexible coupled pumps**



**SLEEVE BEARING... CENTRIFUGAL**  
**SPECIALLY DESIGNED FOR QUIET, VIBRATIONLESS OPERATION**  
**...the ultimate where quietness is a must!**

**BEARINGS**

Pump and motor are equipped throughout with bronze sleeve bearings for quiet, smooth operation. Positive oil lubrication. Oil level indicator is supplied for quick, easy lubrication check.

**MOTORS**

Specially selected for extra-quiet performance. Motors through 5 h.p. are resilient-mounted . . . completely suspended in rubber . . . an added assurance of vibrationless operation.

**INTERCHANGEABLE PARTS**

The same size bearing frame assembly is used for the complete range of 13 pump sizes (from 1½" through 5"). Single bearing frame assembly serves as a standby repair unit for any number of pumps . . . keeps parts inventory to a minimum . . . simplifies on-the-spot service.

**VOLUTE TYPE CASING**

Vertical split case design. Eliminates unnecessary disconnecting of pipes, for quick pump servicing. Maximum working pressure 175 psi. Volute casing supplied with tapping connections for easy venting or draining, and for field gauge readings.

**COUPLER**

Spring type coupler . . . another assurance of quiet operation.

**OVERSIZED SHAFT**

Hardened alloy steel shaft with integral thrust collar . . . extra large . . . highly-polished bearing surfaces.

**BALANCED HYDRAULIC DESIGN**

Balance chamber and thrust pressure relief holes in impeller guarantees smooth per-

formance . . . longer life . . . with bearing loads kept to a minimum.

**MECHANICAL SEAL**

Time-proven "ARMSEAL" design prevents water leakage. Carbon face rotates against a stationary diamond-hard, highly-polished ceramic seat. Self-lubricating . . . for long, trouble-free life.

**BASE**

Proper pump and motor alignment is assured with rigidly constructed, heavy-fabricated steel plate base.

**100% FACTORY-TESTED—**

For head and capacity specified. Every pump is built to rigid specifications, and is accurately assembled and inspected to ensure minimum installation and maintenance expense.