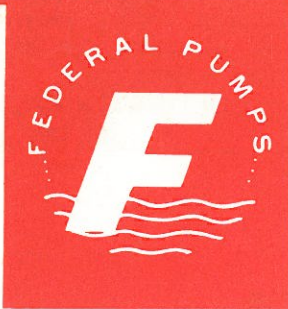


**TYPE**

**CGM**  
**CKM**

**TWO-STAGE**  
**CLOSE-COUPLED PUMPS**



## FEATURES

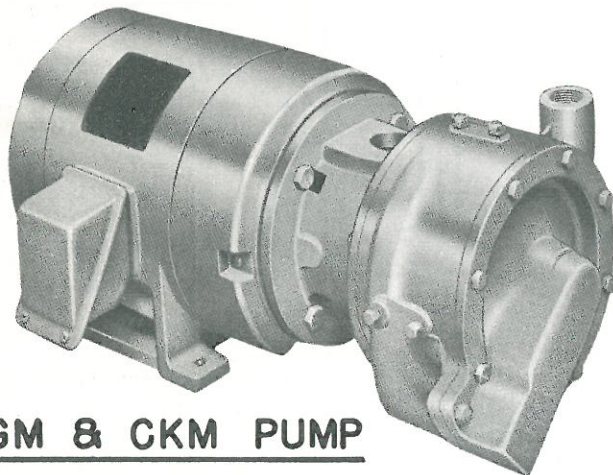
FEDERAL TYPE CGM AND CKM TWO-STAGE CLOSE-COUPLED CENTRIFUGAL PUMP AND MOTOR UNITS ARE DESIGNED FOR PUMPING APPLICATIONS REQUIRING SMALL OR MODERATE CAPACITY AND HIGH PRESSURE, SUCH AS WATER PRESSURE BOOSTER SERVICE AND BOILER FEED.

THE CONSTRUCTION OF THESE PUMPS PERMITS INDEPENDENT ROTATION OF THE SUCTION AND DISCHARGE CONNECTIONS TO SEVERAL POSITIONS. THE PUMPS FEATURE BACK-TO-BACK MOUNTING OF IMPELLERS TO PROVIDE HYDRAULIC BALANCE, THEREBY REDUCING THE THRUST LOAD ON THE MOTOR BEARINGS. THE MECHANICAL SHAFT SEAL IS MOUNTED IN THE SUCTION CHAMBER OF THE FIRST STAGE, LIMITING THE PRESSURE ON THE SEAL TO SUCTION PRESSURE ONLY, PREVENTING DEAD-ENDING OF ABRASIVE PARTICLES IN THE SEAL AREA AND REDUCING THE AMBIENT TEMPERATURE OF THE SEAL FACES.

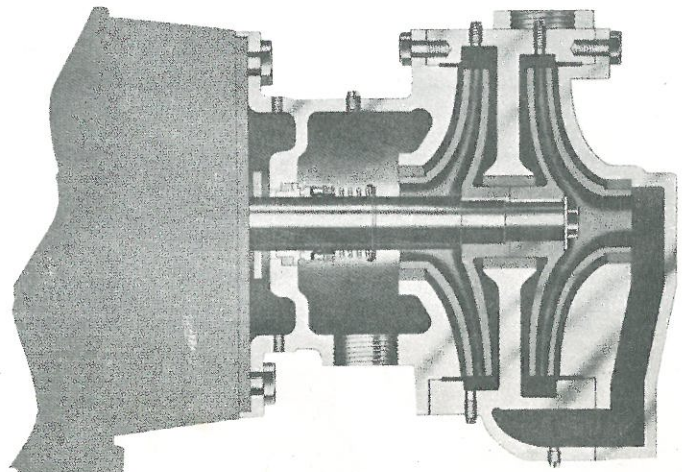
CGM AND CKM PUMPS ARE ALSO AVAILABLE IN FLEXIBLE-COUPLED TYPE (CGMB AND CKMB). THE SAME PERFORMANCE CURVES APPLY.

PUMPS ARE FURNISHED WITH VERTICAL-UP DISCHARGE POSITION UNLESS SPECIFIED OTHERWISE; THE DISCHARGE CAN BE ROTATED TO FOUR POSITIONS. THE SUCTION CONNECTION CAN BE FURNISHED ON THE RIGHT OR LEFT HAND SIDE OF THE PUMP. 1CGM AND 1½CKM PUMPS ARE FURNISHED WITH CW ROTATION. 1½CGM PUMPS ARE FURNISHED WITH CCW ROTATION.

ALL PUMPS ARE BRONZE-FITTED WITH STANDARD MECHANICAL SHAFT SEAL. SPECIAL SEALS, PACKING GLANDS AND OTHER MATERIALS OF CONSTRUCTION ARE ALSO AVAILABLE, AS ARE VARIOUS MODIFICATIONS FROM STANDARD CONSTRUCTION PLUS ACCESSORY ITEMS.



CGM & CKM PUMP



CROSS-SECTIONAL VIEW