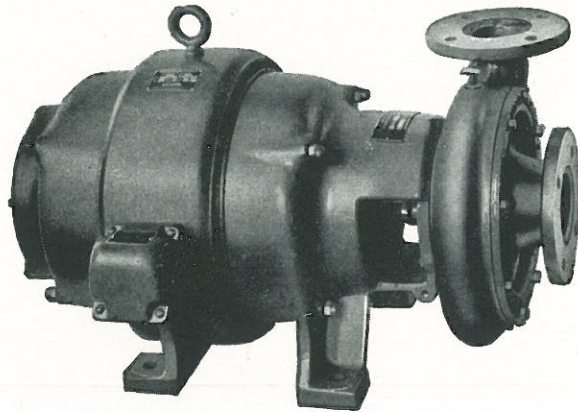


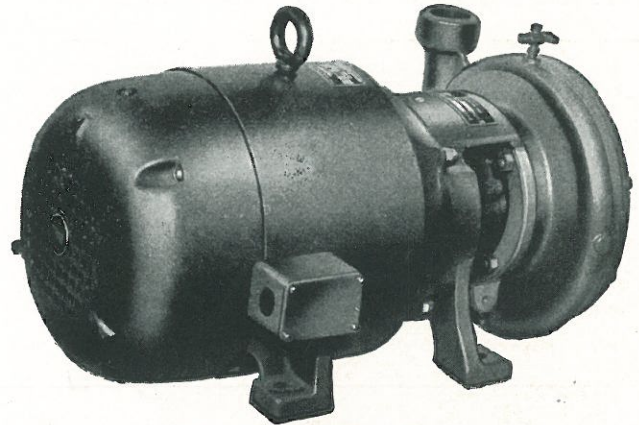
FEDERAL

A. I. A. 29 d 5

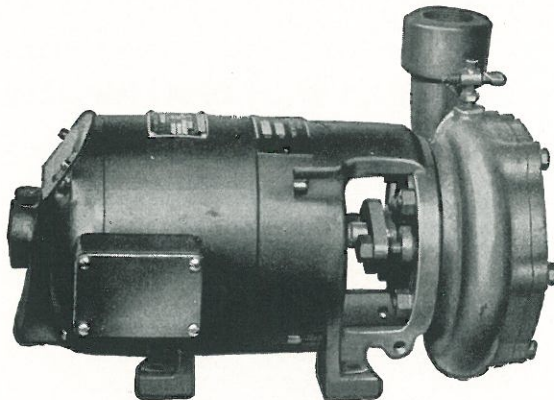
BULLETIN 40



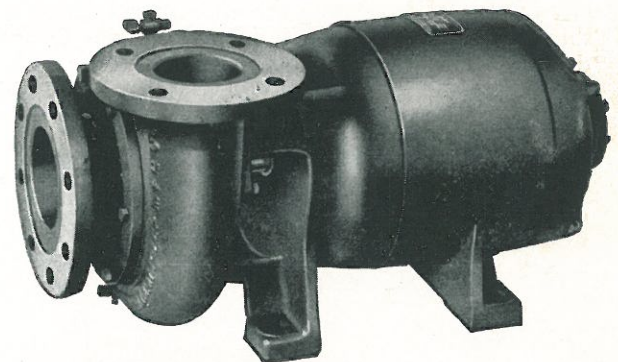
TYPE K CLOSE-COUPLED PUMP
with 3" discharge and
10 H.P., 1750 R.P.M. motor.



TYPE K CLOSE-COUPLED PUMP
with 1 1/4" discharge and
3 H.P., explosion-proof motor.



TYPE EM CLOSED-COUPLED PUMP
with 1 1/4" discharge and
1/4 H.P. motor.



TYPE G CLOSE-COUPLED PUMP
with 3" discharge and
2 H.P., 1750 R.P.M. motor.

CLOSE-COUPLED PUMPS

For General Service - Capacities 10 to 1000 G. P. M.