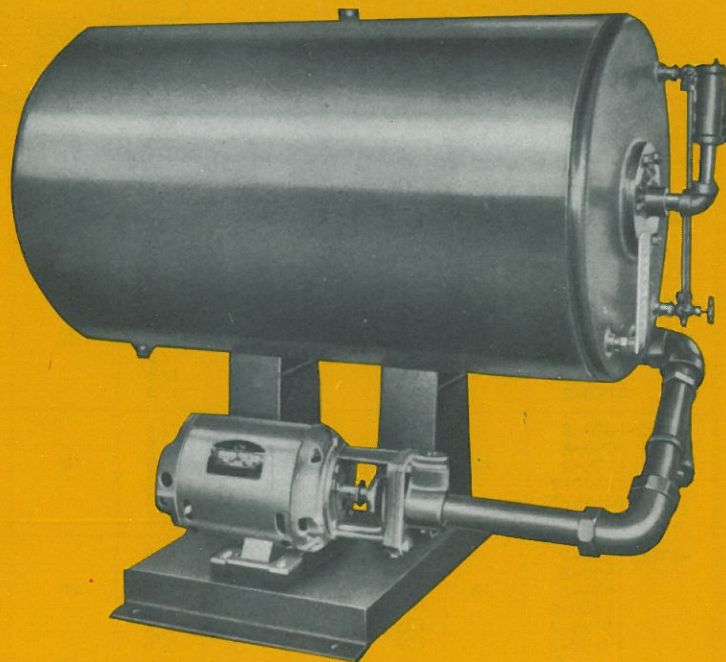
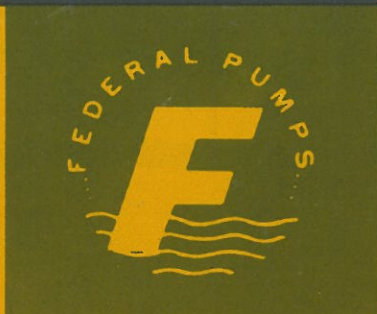


# TYPE 'HSTCC' boiler feed units



- CLOSE-COUPLED TURBINE PUMPS
- 3450 R.P.M. OPERATION
- SINGLE AND DUPLEX UNITS
- AUTOMATIC MAKEUP WATER
- COMPLETELY ASSEMBLED
- AUTOMATIC MAINTENANCE OF BOILER WATER LEVEL
- MODIFICATIONS AND SPECIAL CONTROLS AVAILABLE
- RATINGS TO 30 BOILER H.P.
- DISCHARGE PRESSURES TO 150 P.S.I.
- FOR INDUSTRIAL, INSTITUTIONAL AND RESIDENTIAL INSTALLATIONS

## FEATURES

**PUMP** Close-coupled turbine vane type, bronze-fitted, with stainless steel shaft and leakless mechanical shaft seal.

**MOTOR** 3450 R.P.M., ball bearing, drip-proof construction, in standard NEMA close-coupled frames. 1-phase motors have built-in overload protection. 3-phase motors are furnished with wall mounting magnetic starters to provide overload and low voltage protection.

**RECEIVING TANK** Heavy steel construction with threaded openings, elevated on support leg, equipped with make-up valve assembly, thermometer and water level gauge glass.

**MAKE-UP VALVE** All-bronze automatic make-up valve, with copper float inside receiver, to automatically compensate for loss of condensate in process work or from system leaks.

**SINGLE AND DUPLEX UNITS** Single unit includes one receiving tank, one make-up valve and one close-coupled pump and motor unit, assembled on a steel base with pump suction piping complete (including strainer), and one wall-mounting magnetic starter (when required). Duplex unit includes one receiving tank, one make-up valve and two close-coupled pump and motor units, assembled on a steel base with pump suction piping complete (including strainers), and two wall-mounting magnetic starters (when required).

**MODIFICATIONS AVAILABLE** Non-standard tank sizes, control panels, extra heavy receivers, special receiver coatings, galvanized receivers, extra tappings, baffled inlet, special make-up valves, manhole or hand-hole, corrosion inhibitor bar, hi-temperature return pipe, pressure gauges, special thermometer, inlet strainer, temperature regulator valve, motor controls mounted and wired on unit, automatic alternator or transfer switch, combination starters, starter modifications, etc.

## SUGGESTED SPECIFICATION

Furnish and install where shown on plans, a Single (or Duplex) boiler feed unit equal to Federal Pump Corp. Unit No. HSTCC-\_\_\_\_\_-2, having a capacity of \_\_\_\_\_ G.P.M. (per pump), at a discharge pressure of \_\_\_\_\_ P.S.I. Unit is to be completely assembled at the factory, comprising tank, make-up valve, pump(s) and motor(s), steel bedplate, with pump suction piping complete including strainer in (each) suction line.

Pump(s) to be bronze-fitted, close-coupled, turbine vane type, driven by \_\_\_\_\_ H.P., \_\_\_\_\_ phase, \_\_\_\_\_ cycle, \_\_\_\_\_ volt, 3450 R.P.M., drip-proof, ball bearing motor(s).

Tank to be elevated, heavy welded steel construction with corrosion resistant coating, equipped with threaded pipe connections for return inlet, air vent, drain, gauge glass and thermometer, and to be of \_\_\_\_\_ gallon capacity. The cold water make-up valve shall be of all-bronze construction with copper float and strainer.

FOR 1-PHASE MOTORS: Provide built-in thermal overload protection in (each) motor.

FOR 3-PHASE MOTORS: Furnish a magnetic line voltage starter for (each) motor, to provide overload and low voltage protection.

Furnish (for each boiler) a boiler water level controller for automatic operation of the pump(s), and maintenance of proper boiler water level, complete with low water cut-off and alarm switch.

ESTABLISHED 1927



## FEDERAL PUMP CORPORATION

1144 UTICA AVENUE • BROOKLYN, N. Y. 11203