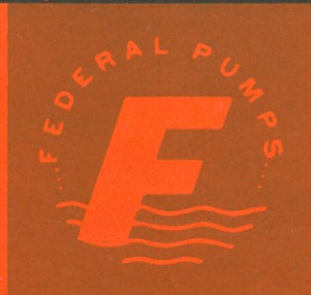


TYPE
'RVCL'

**UNDERGROUND
condensation return units**



FEATURES

PUMP: Bronze-fitted centrifugal pump design assures long operating life without parts replacement or loss of pumping efficiency, by eliminating close clearance moving parts. Stainless steel shaft, bronze guide bearing protected by mechanical shaft seal, and single-piece construction insures vibrationless operation.

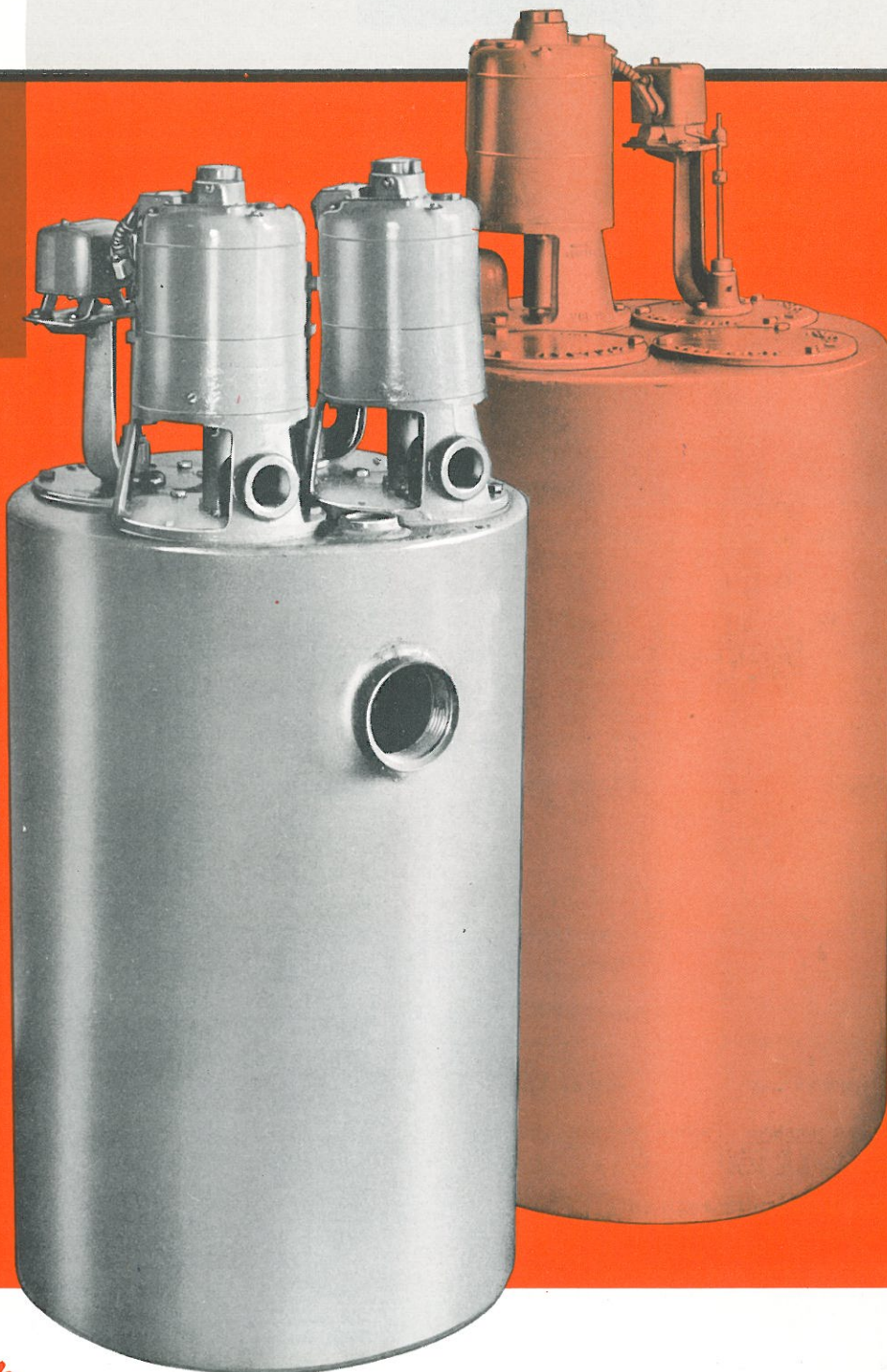
MOTORS: Single phase, 3450 RPM, 115/230v. capacitor type motors have built-in overload protection. Three phase, 3450 RPM, 208/220/440v. motors are furnished with magnetic starters (mounted and wired on unit), with overload relays for motor protection.

FLOAT SWITCH: Enclosed, automatic float switches with adjustable float travel and seamless copper float furnished for each motor.

RECEIVER: Heavy welded steel receivers are standard and are designed for installation with top of receiver at floor level, so that condensate may enter receiver below grade. Cast iron receivers with steel covers are also available as an optional modification.

SINGLE UNIT consists of one receiver, one pump and motor unit and one float switch (plus one magnetic starter for three phase units).

DUPLEX UNIT consists of one receiver, two pump and motor units and two float switches (plus two magnetic starters for three phase units). An automatic alternating float switch can be furnished on Duplex Units in place of the two standard float switches.



ESTABLISHED 1927

FEDERAL PUMP CORPORATION

1144 UTICA AVENUE • BROOKLYN 3, N. Y.